

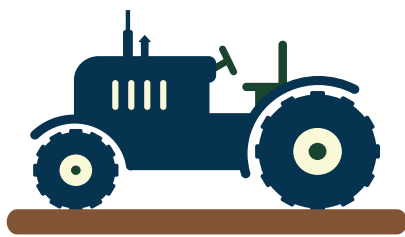


# SOCIO - ECONOMIC SITUATION

OCTOBER AND 10 MONTHS OF 2024

## AGRICULTURE

Planned areas of some main crops as of 20 October, 2024 (compared to the same period last year)



**1,540.9** thous. ha

▼ 0.1%

Winter paddy

**710.7** thous. ha

▲ 2.6%

Winter paddy of  
Mekong River Delta

**53.0**

thous. ha

▲ 7.7%

Maize

**7.2**

thous. ha

▲ 2.0%

Peanut

**3.5**

thous. ha

▲ 5.5%

Soya-bean

**1.7**

thous. ha

▼ 5.6%

Sweet potatoes

**77.0**

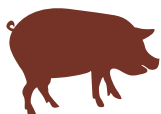
thous. ha

▲ 7.5%

Vegetable and bean

Livestock population at the end of October 2024 compared to the same period last year

▼ 3.4%



Pig

▼ 0.5%



Poultry

▲ 2.4%



Buffalo

▲ 2.6%



Cattle

Fishery production in 10 months of 2024

Aquaculture

**4,612.5**

thous. tons

▲ 3.8%

**TOTAL**

**7,889.8**

thous. tons

▲ 2.5%

Fishing

**3,277.3**

thous. tons

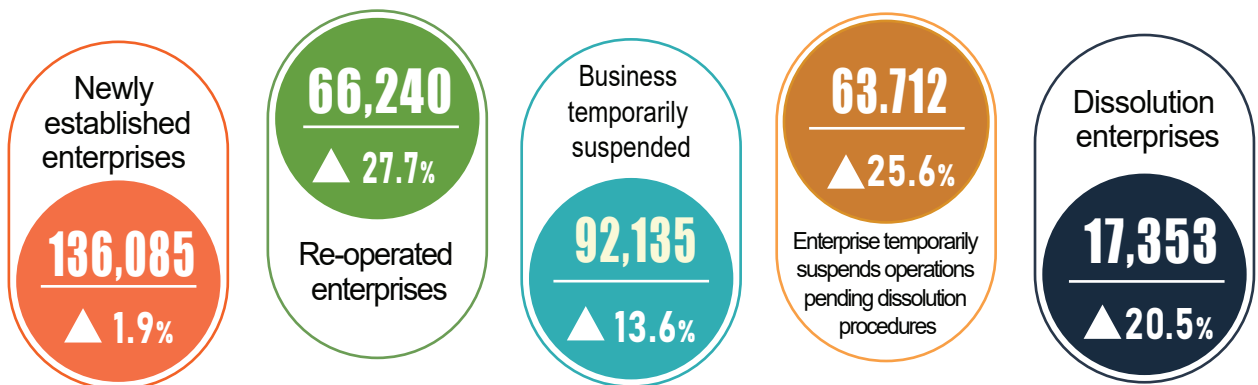
▲ 0.6%

## INDUSTRIAL PRODUCTION IN 10 MONTHS OF 2024

IIP growth rate over the same period last year

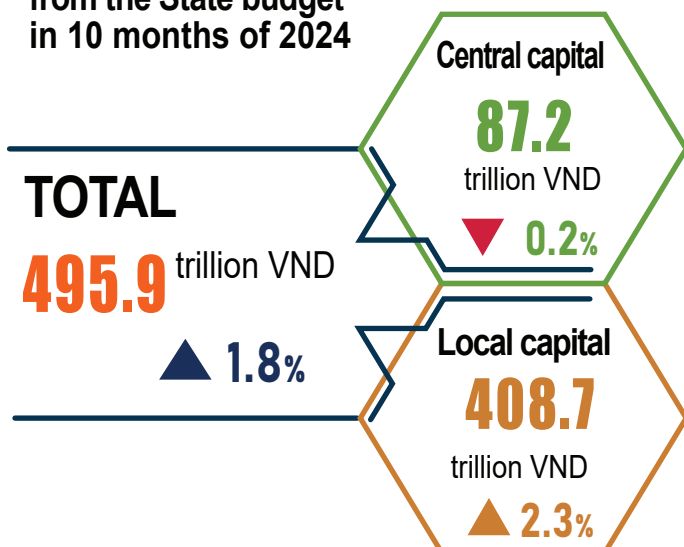


## ENTERPRISE REGISTRATION STATUS IN 10 MONTHS OF 2024

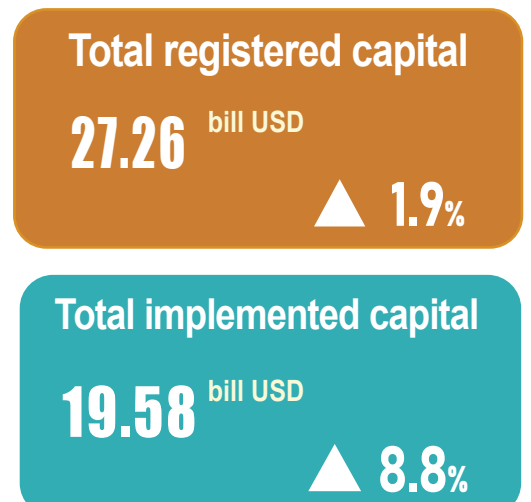


## INVESTMENT

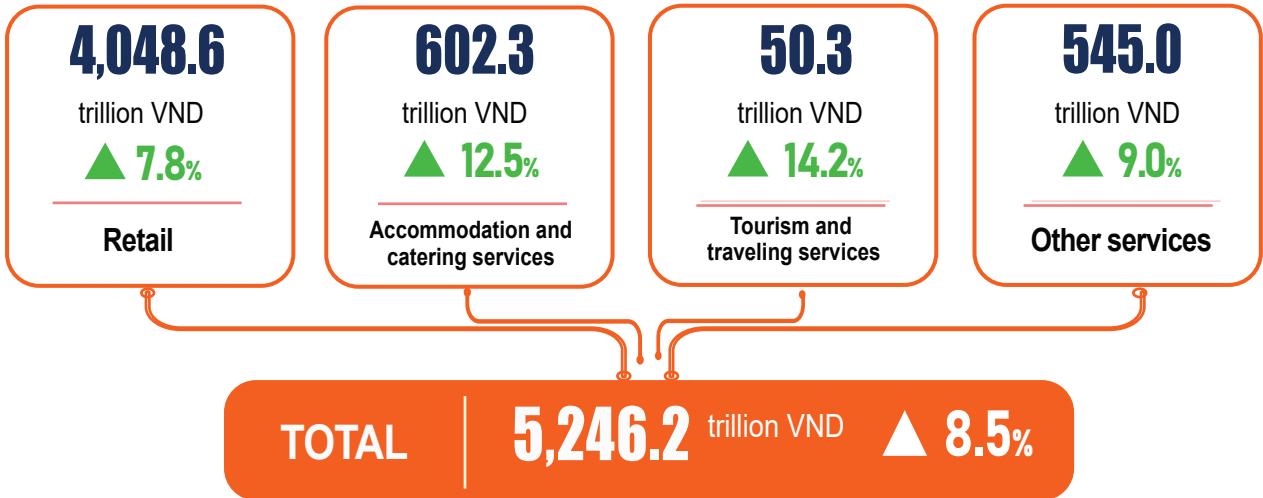
Investment capital from the State budget in 10 months of 2024



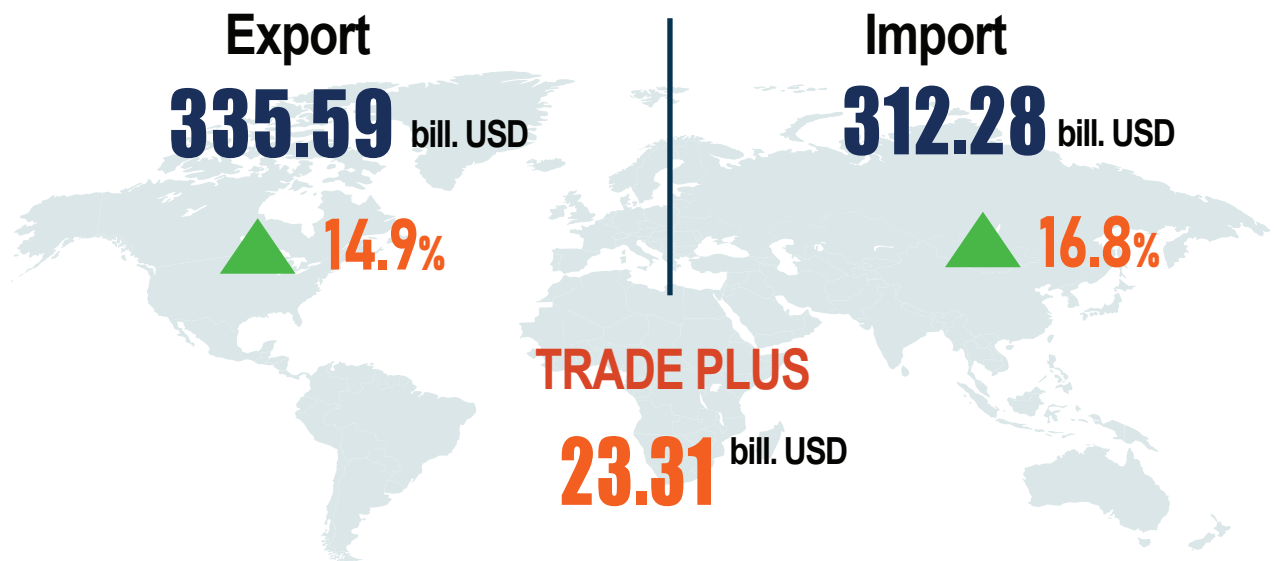
Foreign investment (FDI) from 1/1 to 31/10/2024



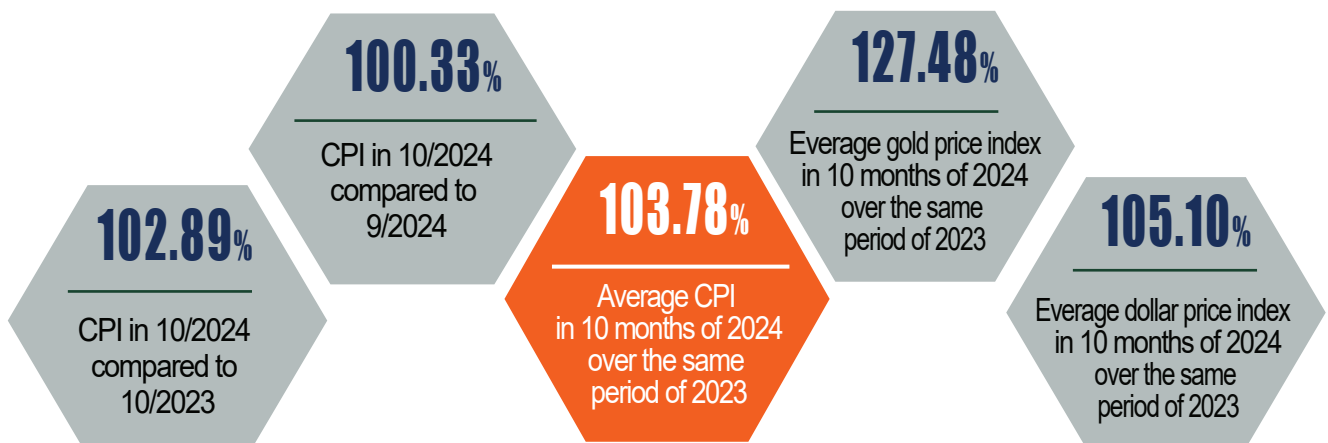
## RETAIL SALES OF CONSUMER GOODS AND SERVICES IN 10 MONTHS OF 2024



## EXPORT AND IMPORT OF GOODS IN 10 MONTHS OF 2024



## PRICE INDEX



## PASSENGER AND FREIGHT TRANSPORT IN 10 MONTHS OF 2024

## Passenger



Passenger carried

**4,136.6** million pers. ▲ 8.1%

Passenger traffic

**227.0** bill. pers.km ▲ 11.6%

## Freight



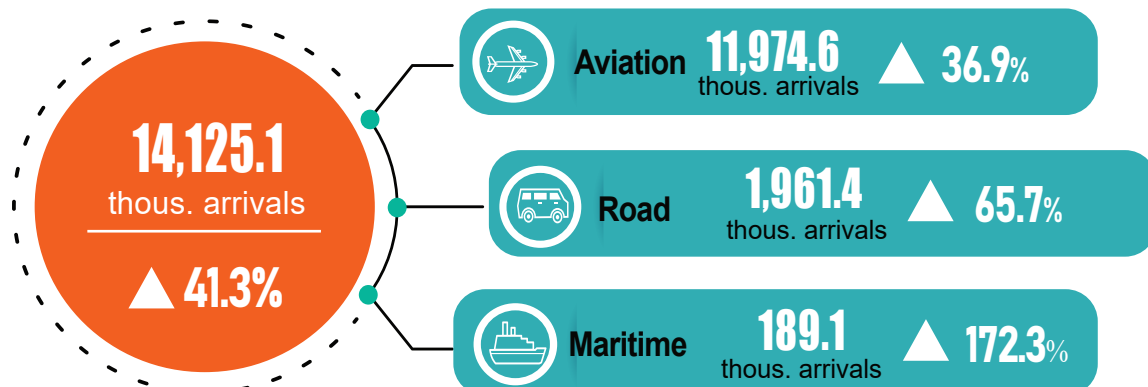
Freight carried

**2,176.2** mill. tons ▲ 14.3%

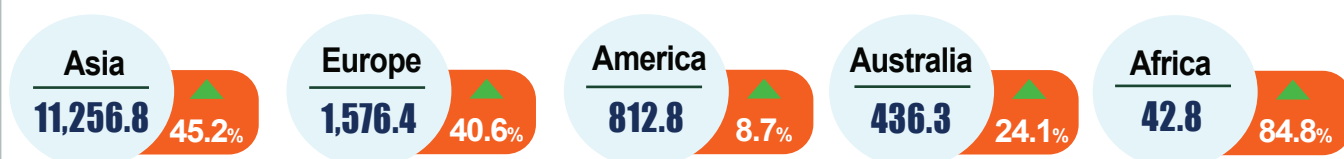
Freight traffic

**443.3** bill.tons.km ▲ 11.0%

## INTERNATIONAL VISITOR ARRIVALS IN VIETNAM IN 10 MONTHS OF 2024



By territories (Thous. arrivals)



## TRAFFIC ACCIDENT IN 10 MONTHS OF 2024

Number of traffic accidents

**19,513**

Per day on average

**64**

accidents

Number of deaths

**8,990**

Per day on average

**30**

persons

Number of injured

**14,505**

Per day on average

**48**

persons